

M 600 WRS

WATERPROOF

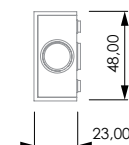
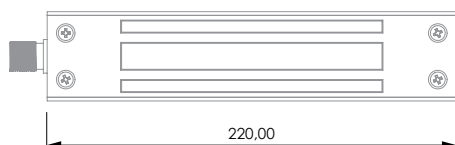
ESPECIFICACIONES INSTALACIÓN INSTALLATION FEATURES

Instalación <i>Installation</i>	_____	Sobreponer <i>Surface Mounting</i>
Alto <i>High</i>	_____	48 mm
Ancho <i>Width</i>	_____	220 mm
Profundo <i>Deep</i>	_____	23 mm

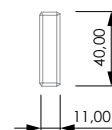
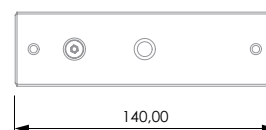
LED <i>Led</i>	_____	No <i>No</i>
Monitorización <i>Monitoring contact</i>	_____	Sí <i>Yes</i>
Temporización <i>Time delay</i>	_____	No <i>No</i>
Rango temperatura de trabajo <i>Working temperature range</i>	_____	-60 / +50 °C

PLANO TÉCNICO TECHNICAL DRAW

VENTOSAS
MAGNETIC LOCK



CONTRA PLACA
ARMATURE PLATE



ESPECIFICACIONES ELÉCTRICAS ELECTRICAL FEATURES

MODELO <i>MODEL</i>	M600	M1200
RETENCIÓN <i>HOLDING FORCE</i>	600lb / 280Kg	1200lb / 500Kg
ALIMENTACIÓN <i>POWER SUPPLY</i>	12-24 VDC	12-24 VDC
CONSUMO CORRIENTE <i>CURRENT CONSUMPTION</i>	400-200 mA	400-200 mA

NUEVA ILUMINACIÓN LED
NEW LED LIGHTING

