

# M 600M

EMBUTIR  
FLUSH

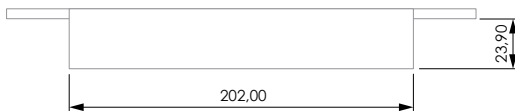
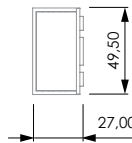
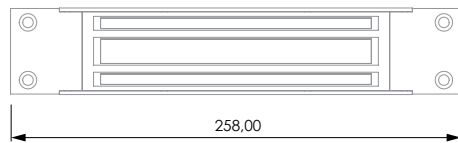
## ESPECIFICACIONES INSTALACIÓN INSTALLATION FEATURES

Instalación <i>Installation</i>	Embutir <i>Flush</i>
Alto <i>High</i>	49,50 mm
Ancho <i>Width</i>	258 mm
Profundo <i>Deep</i>	27 mm

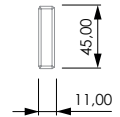
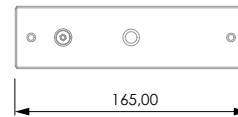
LED <i>Led</i>	No <i>No</i>
Monitorización <i>Monitoring contact</i>	No <i>No</i>
Temporización <i>Time delay</i>	No <i>No</i>
Rango temperatura de trabajo <i>Working temperature range</i>	-60 / +50 °C

## PLANO TÉCNICO TECHNICAL DRAW

VENTOSAS  
MAGNETIC LOCK



CONTRAPLACA  
STRIKE PLATE



## ESPECIFICACIONES ELÉCTRICAS ELECTRICAL FEATURES

MODELO MODEL	M300	M600
RETENCIÓN HOLDING FORCE	300lb / 180Kg	600lb / 280Kg
ALIMENTACIÓN POWER SUPPLY	12 VDC	12 VDC
CONSUMO CORRIENTE CURRENT CONSUMPTION	360 mA	400 mA

